

ARRAY

2

## INTESTINAL ANTIGENIC PERMEABILITY SCREEN™



2 mL Serum

### Antigens Tested

- Actomyosin IgA
- Occludin/Zonulin IgG
- Occludin/Zonulin IgA
- Occludin/Zonulin IgM
- Lipopolysaccharides (LPS) IgG
- Lipopolysaccharides (LPS) IgA
- Lipopolysaccharides (LPS) IgM

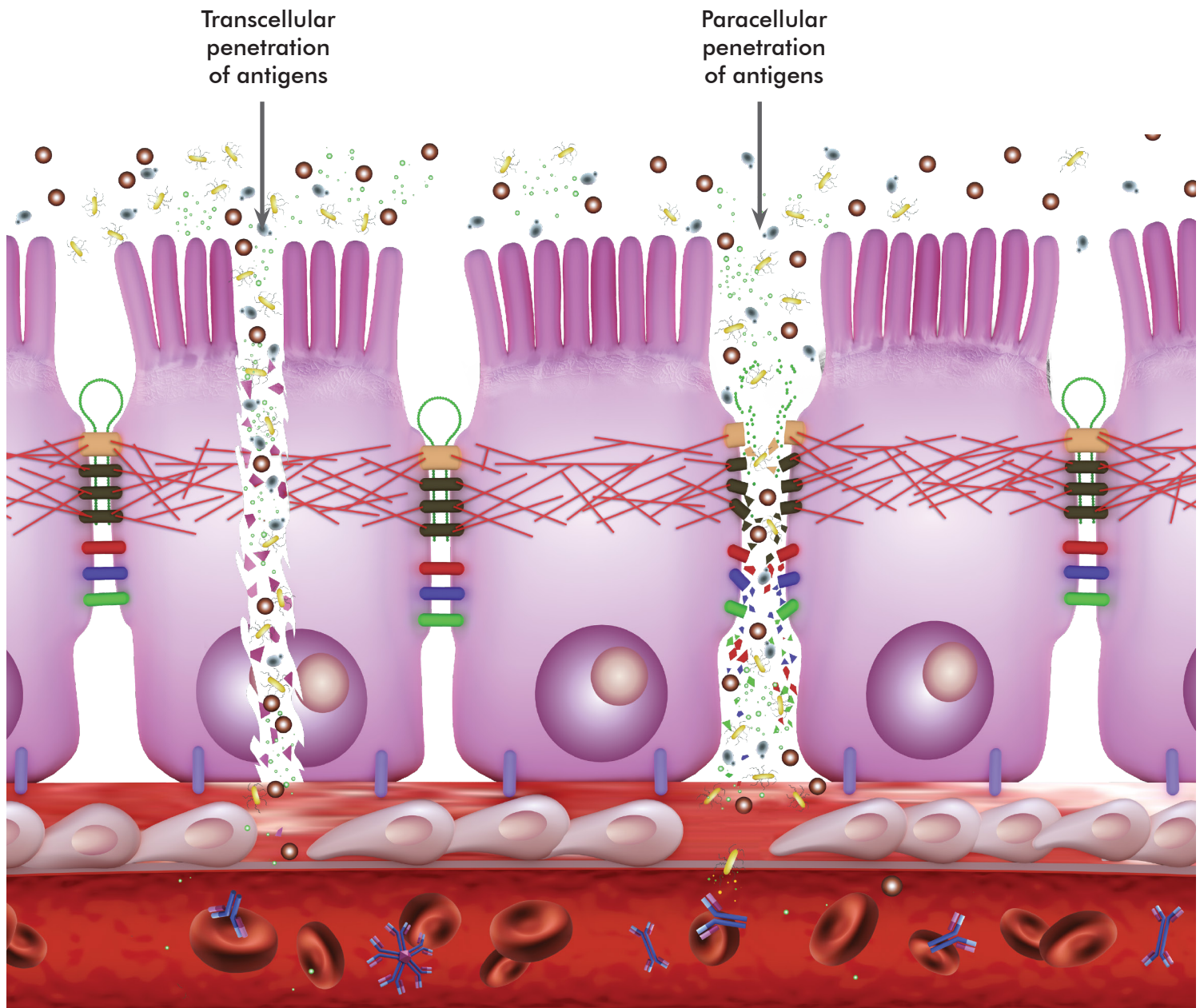
### CLINICAL USE:


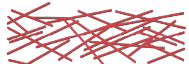



- Measure intestinal permeability to large molecules which inflame the immune system.
- Identify the damaging route through the intestinal barrier.

### RECOMMENDED FOR PATIENTS WHO:

- Present multiple symptom complaints (including Chronic Fatigue Syndrome).
- Suffer from abnormal immune cell count and function (including autoimmune diseases).
- Have multiple food sensitivity.

# TRANSCELLULAR & PARACELLULAR ROUTES OF INTESTINAL BARRIER PENETRATION



Antigens Measured	
 Actomyosin Proteins	
 Occludin/Zonulin Proteins	
 Lipopolysaccharides	Endotoxins from Gram-Negative Bacteria